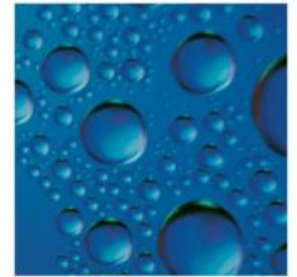
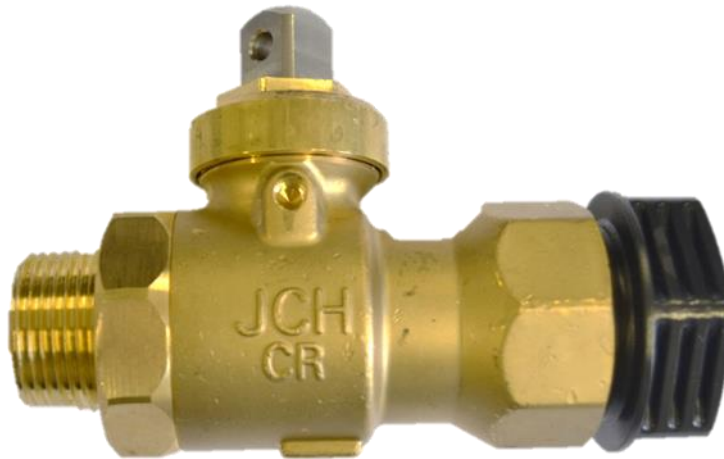


JCH ball valve Type 745512

With male threads and PRK compression joints.
Full bore
VA and SITAC approved



Version 0116



JCH ball valve with male threads and PRK compression joints

Application:

Service valve for water supply and sewage.

Suitable for drilling under pressure.

Test:

JCH 100% test

Accessories:

Installation units: No.: 145221-000 and No.: 145223-000

The installation units can be ordered in two different sizes:
900-1500mm and 1100-1900mm

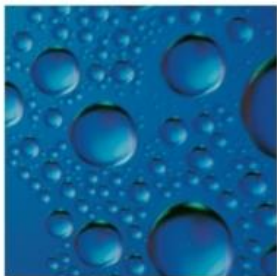
Material

Compression joint:	Acetal-plastic
Body:	DZR Brass CW625N
Spindle:	Stainless steel - AISI 303
Spindle and gasket	SEDI PTFE + O-rings of NBR rubber
Ball:	Stainless acid proof steel - AISI 316
Top gasket:	NBR O-rings
Top union:	DZR Brass CW602N
Gasket inside:	SEDI PTFE

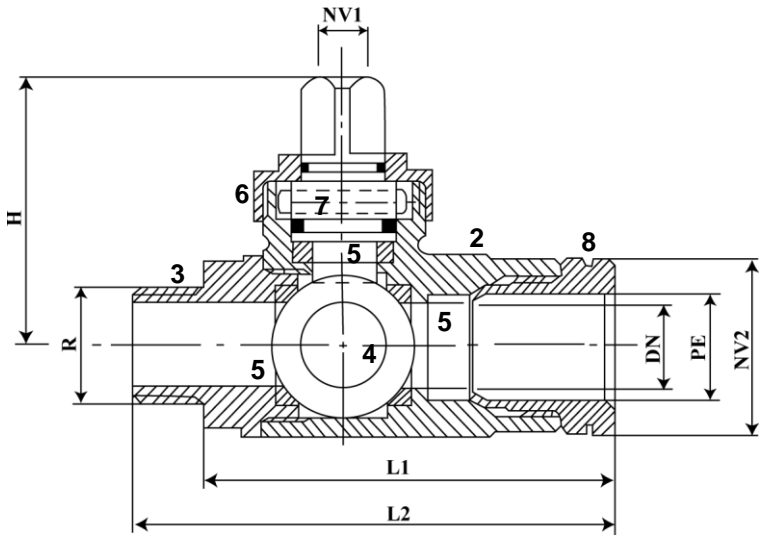
JCH Ballvalve Type 745512

with 16mm # operating key

Ball valve type 745512 is suitable as service valve for water supply and sewage.
 The valve can be used for drilling under pressure because of the full bore version.
 The valve is quickly and easily to install and use.
 The valve is made of the finest and best materials.



Version 0116



Components

1. Spindle

2. Body

3. Nipple

4. Ball

5. SEDI PTFE gaskets
- 6.Union nut

7.NBR O-rings

8.PRK compression joint

Order no.	LNS no.	R “	PE mm	DN mm	L1 mm	L2 mm	H mm	NV1 mm	NV2 mm	weight kg
745512-025	343-020-10-00	¾	25	20	98	114	95	16	40	0,9
745512-032	343-025-10-00	1	32	25	115	133	107	16	48	1,3
745512-040	343-032-10-00	1¼	40	32	130	148	118	16	55	1,9
745512-050	343-040-10-00	1½	50	40	146	166	122	16	69	3,0

JCH A/S

Karetmagervej 21 DK-7100 Vejle Tel. +45 75 85 84 08 Fax +45 75 85 80 82
 CVR-nr. 87 56 20 18 | CVR-nr. DK 15 30 02 72